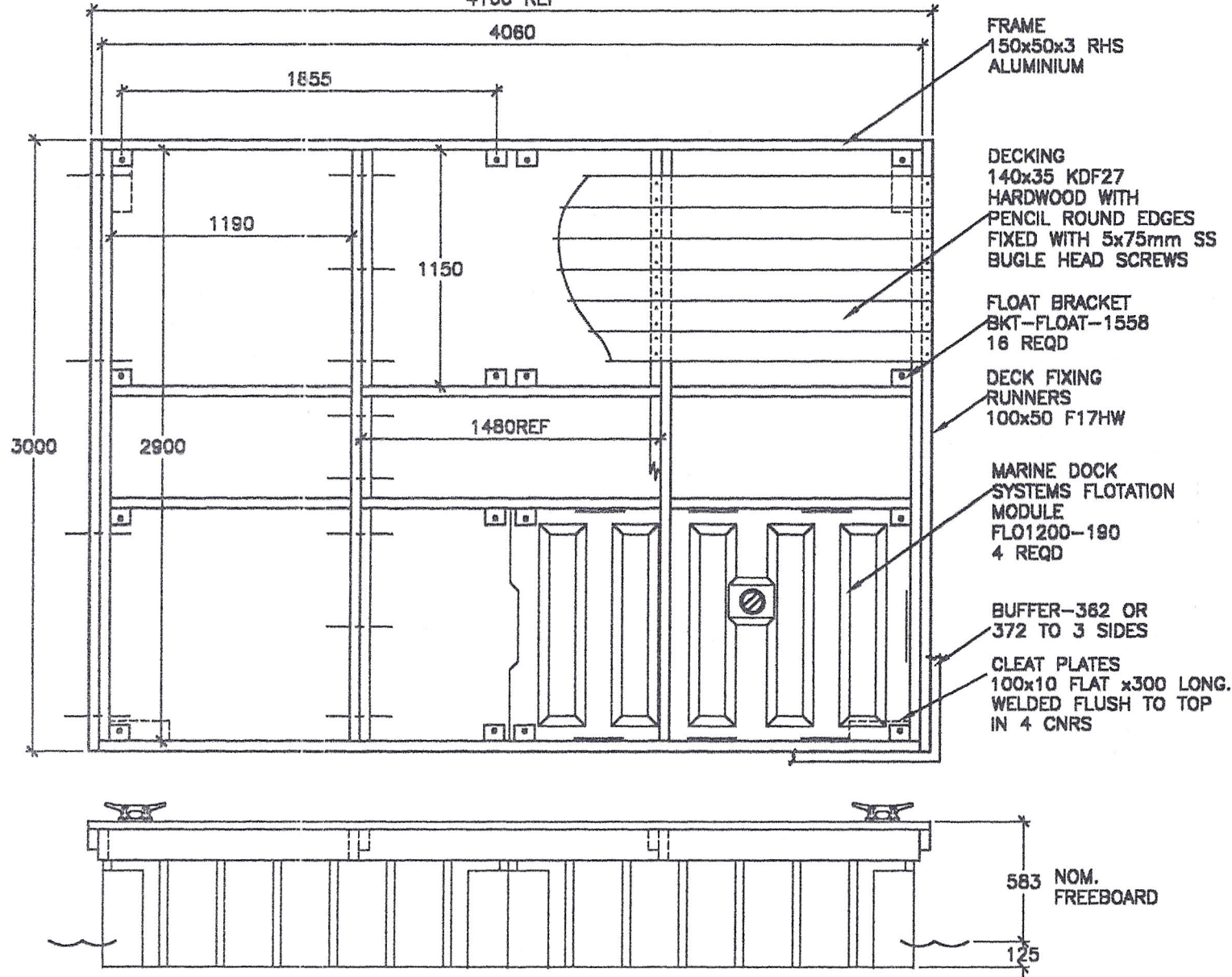


COPYRIGHT ALL RIGHTS RESERVED

4160 REF

DO NOT SCALE



NOTE:

- PONTON IS DESIGNED IN ACCORDANCE WITH AS 3962-1991 GUIDELINES FOR DESIGN OF MARINAS. RESTRICTED ACCESS.
- ALL WELDING IN ACCORDANCE WITH AS 1665-1992. WELDING OF ALUMINIUM STRUCTURES.
- ALL STRUCTURE IS FULLY WELDED WITH A NOMINAL FILLET OF 5mm
- ALL EXTRUSIONS ARE OF GRADE 6063-T5 OR EQUIVALENT.
- FILLER ALLOY IS GRADE 5356
- ALL TIMBER IS TO BE TREATED WITH A SUITABLE PRESERVATIVE. (CREOSOTE, DECKING OIL ETC)
- ALL FASTENERS ARE CORROSION RESISTANT STAINLESS STEEL.
- ALL EXPOSED BOLTS ARE TO BE RECESSED INTO THE TIMBER BY COUNTER BORING.
- ALL BOLT THREADS ARE TO BE TREATED WITH ANTI-SIEZE OR EQUIVALENT LUBRICATING COMPOUND, PRIOR TO FASTENING.

APPROX. WEIGHT-850kg

**MARINE DOCK SYSTEMS
PTY LTD**

4.1m x3.0m PONTON
4x 1200L FLOATS

PONTON-2493



| | | | | |
|-------|----------|-----|----------------|----------|
| SCALE | N.T.S. | DWG | A4-2493 | |
| DRAWN | JPM | REV | A | 27,10,00 |
| DATE | 27,10,00 | CHK | | APP'D |