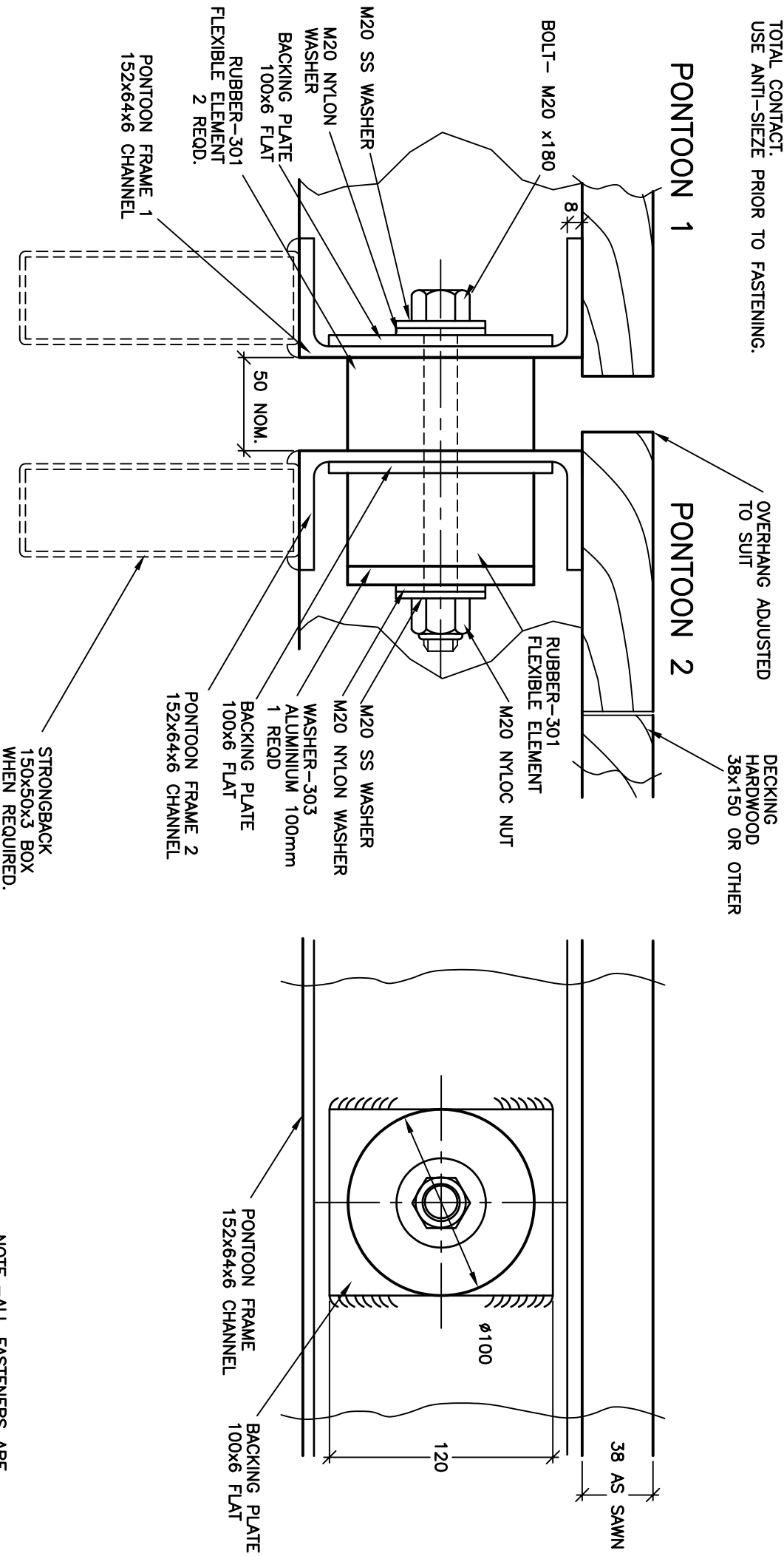


COPYRIGHT ALL RIGHTS RESERVED

DO NOT SCALE.

RUBBER ELEMENTS ARE TO BE PRE-LOADED WITH APPROX. 2-3 TURNS OF THE NUT AFTER TOTAL CONTACT.
USE ANTI-SIZEE PRIOR TO FASTENING.



NOTE -ALL FASTENERS ARE CORROSION RESISTANT STAINLESS STEEL.
-RUBBER ELEMENTS ARE 60 DURO BLACK NEOPRENE

MARINE DOCK SYSTEMS
PTY LTD

MARINA COUPLING
DETAIL

COMTOR
HIGH MOUNT



SCALE	N.T.S.	DRAWING No.
DRAWN	BJM	
DATE	08.07.96	REV
		C
		A4-1877