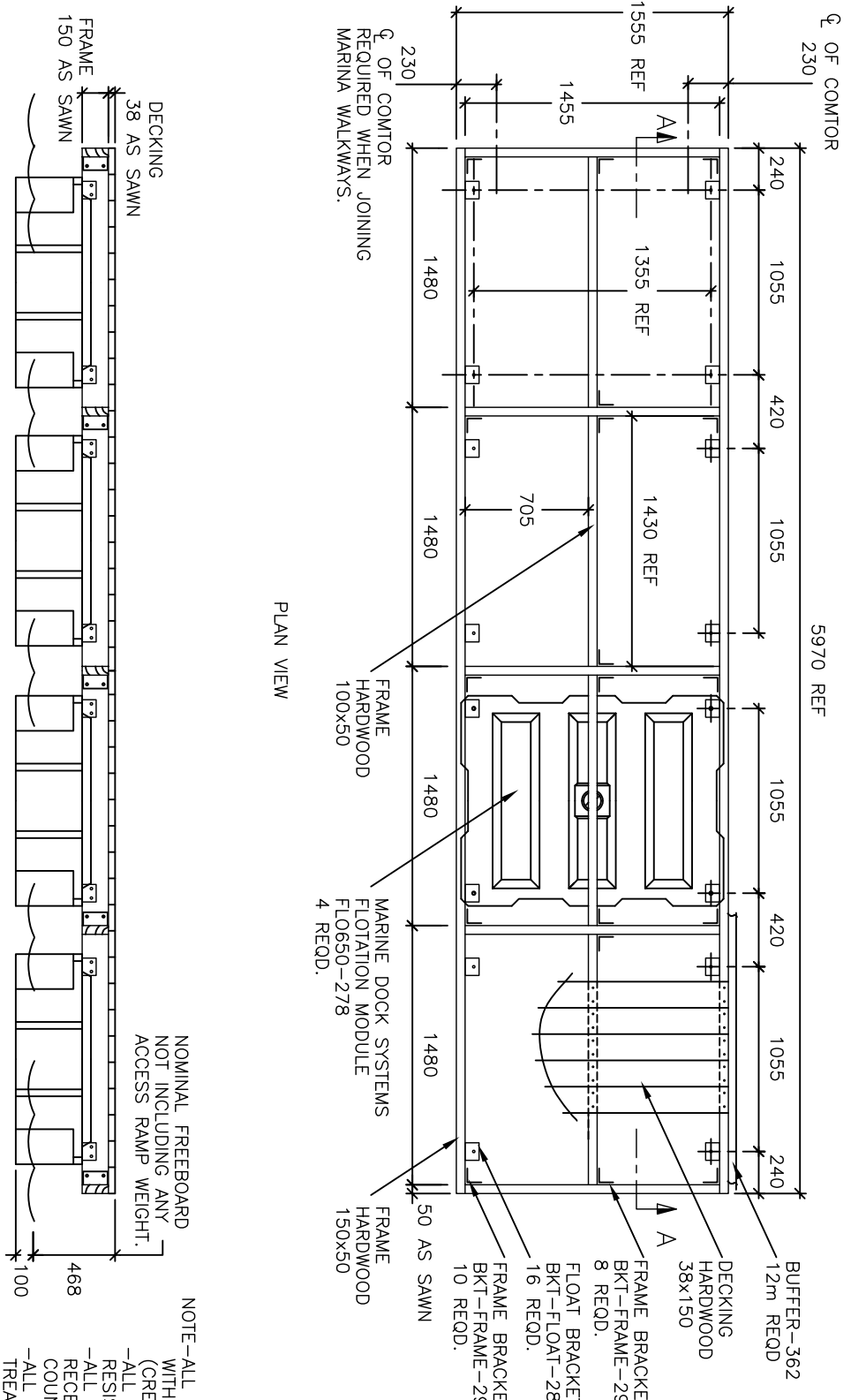


COPYRIGHT ALL RIGHTS RESERVED

DO NOT SCALE



FOR ADDITIONAL ASSEMBLY DETAILS, REFER TO THE FOLLOWING DRAWINGS:  
 FRAME BKT- A4-736  
 FRAME BKT- A4-739  
 FLOAT AND DECK- A4-730  
 CLEAT ASSEM- A4-717  
 BUFFER ASSEM- A4-740  
 COMTOR- A4-743

FASTENERS REQUIRED.		
PART No.	ITEM	QTY. REQD.
737	3/8" BOLTx3 1/2"	22
370	3/8" BOLTx3"	92
372	1" WASHER	196
296	1 1/2" WASHER	32
371	3/8" NYLOC NUT	114
729	DECK SCREW	252
731	BUFFER SCREW	60

NOTE-ALL TIMBER IS TO BE TREATED WITH A SUITABLE PRESERVATIVE. (GROSSOTE, DECKING PAINT, ETC)  
 -ALL FASTENERS ARE CORROSION RESISTANT STAINLESS STEEL.  
 -ALL EXPOSED BOLTS ARE TO BE RECESSED INTO THE TIMBER BY COUNTER BORING.  
 -ALL BOLT THREADS ARE TO BE TREATED WITH ANTI-SIEZE OR EQUIVALENT LUBRICATING COMPOUND PRIOR TO FASTENING.  
 -THIS DRAWING IS FOR A PONTOON OF TYPICAL DESIGN. ENGINEERING EVALUATION SHOULD BE PERFORMED FOR THE PONTOONS SUITABILITY FOR EACH PARTICULAR INSTALLATION.

DECK AREA 9.28m<sup>2</sup>  
 APPROX. WEIGHT 690Kg

**MARINE DOCK SYSTEMS**  
**PTY LTD**

6.0m x 1.5m WALKWAY  
 4 x 650L FLOATS

MARINA WALKWAY  
 PONTOON-700



SCALE	N.T.S.	DRAWING No.	<b>A4-700</b>
DRAWN	BJM	DATE	14.7.97
REV	D		